

# Abaxis Piccolo xpress<sup>™</sup>

A breakthrough in point-of care diagnostics

Closer to Care.



# Closer to Care.

**piccolo** *xpress*<sup>™</sup>  
chemistry analyzer

## A breakthrough in point of care diagnostics

### **Fast, easy, accurate on-site testing**

The Piccolo xpress<sup>™</sup> is a fully automated system, that delivers comprehensive on-site chemistry results within 12 minutes.



- very small sample: 100µl
- whole blood, serum or plasma
- time-saving walk-away operation
- self-contained, single-use, self-calibrating reagent discs
- 16 pre-configured, multi-analyte panels
- 12 minutes to complete panel result
- Portable so that you can take it wherever it's needed
- USB and Ethernet for easy connectivity to LIS or peripherals

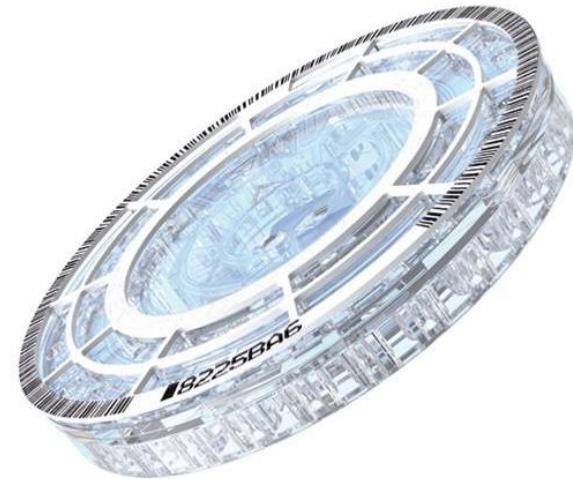
Closer to Care.

**ABAXIS**

# Piccolo xpress™ - Reagent Discs



Preconfigured and Color-Coded



Closer to Care.



# Piccolo xpress™ - smart operating system

**piccolo** xpress™  
chemistry analyzer

From blood draw to printed results in 3 easy steps within 12 minutes



### Add sample

100µl whole blood, serum or plasma

30 sec



### Insert disc

walk-away operation  
self calibrates with every test run

12 minutes



### Read results

printed on self-adhesive hard copy or  
via electronic transfer

Closer to Care.

**ABAXIS**

# Piccolo xpress™ - Accurate and Reliable

**piccolo** xpress™  
chemistry analyzer

piccolo xpress  
MetLyte Plus CRP

02 Aug 2013 02:44 AM

Sample Type: Patient

Patient ID: 020813

Disc Lot Number: 3192BA2

Serial Number: 0000P20026

---

|      |       |         |        |
|------|-------|---------|--------|
| GLU  | 111   | 73-118  | mg/dL  |
| BUN  | 16    | 7-22    | mg/dL  |
| CRE  | 0.5 * | 0.6-1.2 | mg/dL  |
| CK   | 79    | 30-380  | U/L    |
| NA+  | 139   | 128-145 | mmol/L |
| K+   | 4.5   | 3.6-5.1 | mmol/L |
| CL-  | 100   | 98-108  | mmol/L |
| tCO2 | 26    | 18-33   | mmol/L |
| CRP  | < 5.0 | 0.0-7.5 | mg/L   |

QC OK  
HEM 0 LIP 0 ICT 0

## Results are printed on

- a self-adhesive hard-copy
- or via electronic transfer
- allowing immediate access to critical information at the point-of-care

## Large memory capacity

- stores up to 5000 patient records

## Externally accessible

- USB or Ethernet data transfer technology facilitates LIS connectivity

## Precision and specificity

- Comparable to premium laboratory analyzers

## Built-in intelligent Quality Control (iQC™) system

- Continuous quality control checks on every run
- Guaranties accurate and reliable results

Closer to Care.

**ABAXIS**

# Piccolo xpress™ Test Menu



| Piccolo xpress™ Panels                      | Albumin | Alkaline Phosphatase | Alanine Aminotransferase | Amylase | Aspartate Aminotransferase | Direct Bilirubin | Blood Urea Nitrogen | Total Calcium | Creatine Kinase | Chloride | Creatinine | C-Reactive Protein | Gamma-Glutamyl-Transferrase | Glucose | Potassium | Lactate | Lactate Dehydrogenase | Magnesium | Sodium | Phosphorus | Total Bilirubin | Total Carbon Dioxide | Total Protein | Uric Acid | Total Cholesterol | CHOL/HDL ratio* | High Density Lipoprotein | Non-HDL* | Low Density Lipoprotein* | Triglycerides | Very Low Density Lipoprotein* |   |   |
|---|---------|----------------------|--------------------------|---------|----------------------------|------------------|---------------------|---------------|-----------------|----------|------------|--------------------|-----------------------------|---------|-----------|---------|-----------------------|-----------|--------|------------|-----------------|----------------------|---------------|-----------|-------------------|-----------------|--------------------------|----------|--------------------------|---------------|-------------------------------|---|---|
| Analytes                                    | ALB     | ALP                  | ALT                      | AMY     | AST                        | DBIL             | BUN                 | Ca            | CK              | Cl-      | CRE        | CRP                | GGT                         | GLU     | K+        | LAC     | LDH                   | Mg        | Na+    | PHOS       | TBIL            | tCO <sub>2</sub>     | TP            | UA        | CHOL              | CHOL/HDL*       | HDL                      | nHDL*    | LDL*                     | TRIG          | VLDL*                         |   |   |
| General Chemistry 6<br># 400-0006           |         |                      | ●                        |         | ●                          |                  | ●                   |               |                 |          | ●          |                    | ●                           | ●       |           |         |                       |           |        |            |                 |                      |               |           |                   |                 |                          |          |                          |               |                               |   |   |
| General Chemistry 13<br># 400-0029          | ●       | ●                    | ●                        | ●       | ●                          |                  | ●                   | ●             |                 |          | ●          |                    | ●                           | ●       |           |         |                       |           |        |            | ●               |                      | ●             | ●         |                   |                 |                          |          |                          |               |                               |   |   |
| BioChemistry Panel Plus<br># 400-0035       | ●       | ●                    | ●                        | ●       | ●                          |                  | ●                   | ●             |                 |          | ●          | ●                  | ●                           | ●       |           |         |                       |           |        |            |                 |                      | ●             | ●         |                   |                 |                          |          |                          |               |                               |   |   |
| Basic Metabolic Panel<br># 400-0024         |         |                      |                          |         |                            |                  | ●                   | ●             |                 | ●        | ●          |                    |                             | ●       | ●         |         |                       |           |        | ●          |                 | ●                    |               |           |                   |                 |                          |          |                          |               |                               |   |   |
| Basic Metabolic Panel Plus<br># 400-0031    |         |                      |                          |         |                            |                  | ●                   | ●             |                 | ●        | ●          |                    |                             | ●       | ●         |         | ●                     | ●         |        | ●          |                 | ●                    |               |           |                   |                 |                          |          |                          |               |                               |   |   |
| Comprehensive Metabolic Panel<br># 400-0028 | ●       | ●                    | ●                        |         | ●                          |                  | ●                   | ●             |                 | ●        | ●          |                    |                             | ●       | ●         |         |                       |           |        | ●          |                 | ●                    | ●             |           |                   |                 |                          |          |                          |               |                               |   |   |
| Electrolyte Panel<br># 400-0022             |         |                      |                          |         |                            |                  |                     |               |                 | ●        |            |                    |                             |         | ●         |         |                       |           | ●      |            |                 |                      |               |           |                   |                 |                          |          |                          |               |                               |   |   |
| MetLyte 8 Panel<br># 400-0023               |         |                      |                          |         |                            |                  | ●                   |               | ●               | ●        | ●          |                    |                             | ●       | ●         |         |                       |           | ●      |            |                 |                      | ●             |           |                   |                 |                          |          |                          |               |                               |   |   |
| MetLyte Plus CRP<br># 400-0034              |         |                      |                          |         |                            |                  | ●                   | ●             | ●               | ●        | ●          | ●                  |                             | ●       | ●         |         |                       |           | ●      |            |                 |                      | ●             |           |                   |                 |                          |          |                          |               |                               |   |   |
| MetLac 12 Panel<br># 400-0037               | ●       |                      |                          |         |                            |                  | ●                   | ●             |                 | ●        | ●          |                    |                             | ●       | ●         | ●       |                       | ●         | ●      | ●          |                 | ●                    |               |           |                   |                 |                          |          |                          |               |                               |   |   |
| Lipid Panel<br># 400-0025                   |         |                      |                          |         |                            |                  |                     |               |                 |          |            |                    |                             |         |           |         |                       |           |        |            |                 |                      |               |           | ●                 | ●               | ●                        | ●        | ●                        | ●             | ●                             | ● | ● |
| Lipid Panel Plus<br># 400-0030              |         |                      | ●                        |         | ●                          |                  |                     |               |                 |          |            |                    |                             | ●       |           |         |                       |           |        |            |                 |                      |               |           | ●                 | ●               | ●                        | ●        | ●                        | ●             | ●                             | ● | ● |
| Hepatic Function Panel<br># 400-0026        | ●       | ●                    | ●                        |         | ●                          | ●                |                     |               |                 |          |            |                    |                             |         |           |         |                       |           |        |            | ●               |                      | ●             |           |                   |                 |                          |          |                          |               |                               |   |   |
| Liver Panel Plus<br># 400-0003              | ●       | ●                    | ●                        | ●       | ●                          |                  |                     |               |                 |          |            |                    | ●                           |         |           |         |                       |           |        |            | ●               |                      | ●             |           |                   |                 |                          |          |                          |               |                               |   |   |
| Renal Function Panel<br># 400-0027          | ●       |                      |                          |         |                            |                  | ●                   | ●             |                 | ●        | ●          |                    |                             | ●       | ●         |         |                       |           |        | ●          | ●               |                      | ●             |           |                   |                 |                          |          |                          |               |                               |   |   |
| Kidney Check<br># 400-0033                  |         |                      |                          |         |                            |                  | ●                   |               |                 |          | ●          |                    |                             |         |           |         |                       |           |        |            |                 |                      |               |           |                   |                 |                          |          |                          |               |                               |   |   |

\*Calculated value

Closer to Care.



# Wherever care is needed, Piccolo xpress™ is there

**piccolo** *xpress*™  
chemistry analyzer



## Comprehensive chemistry results in minutes

- The Piccolo xpress™ delivers results in minutes, right on the spot
- Clinical decisions can be done quickly
- diagnostic solutions directly independent from location

## Fast and easy handling

- results in 12 minutes with automatic calibration and just seconds of hands-on-time
- intuitive and user-friendly handling
- The Piccolo xpress™ can be used by trained personal and doesn't need laboratory technicians for performing

## Vital chemistry information you need – on the spot

- The Piccolo xpress™ avoids the need to transport blood samples to a laboratory
- Enables professional diagnostic in air plains, helicopters, cruise liners, mobile doctors, scientific camps, rural areas or remote islands
- Fast and easy solution especially in combination with telemedicine



Closer to Care.

**ABAXIS**

# Piccolo xpress™ - benefits & impact on healthcare

**piccolo** *xpress*  
chemistry analyzer



## Small sample size: 100µl

- higher convenience level for patients
- enables new possibilities for diagnostics
- advantageous specifically in pediatric, geriatric and oncology facilities

## Precise and specific test results

- gold-standard „wet chemistry“ results
- onboard iQC™ system ensures accurate and reliable results
- accuracy and precision like premium laboratory analyzer

## Comprehensive diagnostic on-the-spot

- 16 pre-configured, multi-analyte panels
- portable system for use wherever it's needed
- shortens patients turnaround time (TAT)



Closer to Care.

**ABAXIS**



For further information,  
please contact us!

[info@poct.co.uk](mailto:info@poct.co.uk)

ABAXIS Europe GmbH  
Pekapark, T9  
Otto-Hesse-Straße 19  
D-64293 Darmstadt  
Germany

Point Of Care Testing Ltd  
Unit 18 Arbroath Business Centre  
Dens Road  
Arbroath  
Angus  
DD11 1RS  
Phone: +44(0)1241 439 020  
Fax: +44(0)1241 439 190  
Email: [info@poct.co.uk](mailto:info@poct.co.uk)

Closer to Care.

